

YOUTH AND COMMUNITY ENGAGEMENT WITHIN HFRS

Station Commander Jon Horastead
Watford and Three Rivers
January 2016





LiFE

Aimed at young people between 13 and 19.

Either have fire-setting, anti-social behaviour or confidence issues

Referred from schools, housing associations, police etc.





PRINCE'S TRUST

Working with local young people aged 17 to 30.
Helping them prepare to get work, education or training.
Unlocking potential by developing confidence and skills.





FIRE CADETS

**Aimed at young people aged 13 to 17.
To give an insight to working in the fire service.
Promotes social responsibility and respect.**





DUKE OF EDINGBURGH

Run in conjunction with local secondary schools and Youth Connexions.
Fire Service provide skills training required for Bronze Award.
Promotes team work and self discipline.





BOX CLEVA

Aimed at reducing anti-social behaviour in young people.
Promotes healthy lifestyle through sport.
Children from 8 to 15 taking part in non-contact training.





LOCAL YOUTH GROUPS

We visit all types of local youth groups by invitation.
We assist with their badges and awards.
Always link their visits to aspects of home fire safety.





LOCAL SCHOOLS

We visit all local schools from pre-school to colleges.
We provide a range of packages linked to the curriculum.
Schools visit us at station or we attend their schools.





YOUTH CONNEXIONS

We work closely with Youth Connexions across a broad range of activities.

Engage on Home Fire Safety, Healthy Lifestyles and Road Safety.





STATION OPEN DAYS

Station Open Days held at Rickmansworth and Watford.
Aimed at promoting our work in the community and Fire Safety.
Targeted at children to draw parents in.

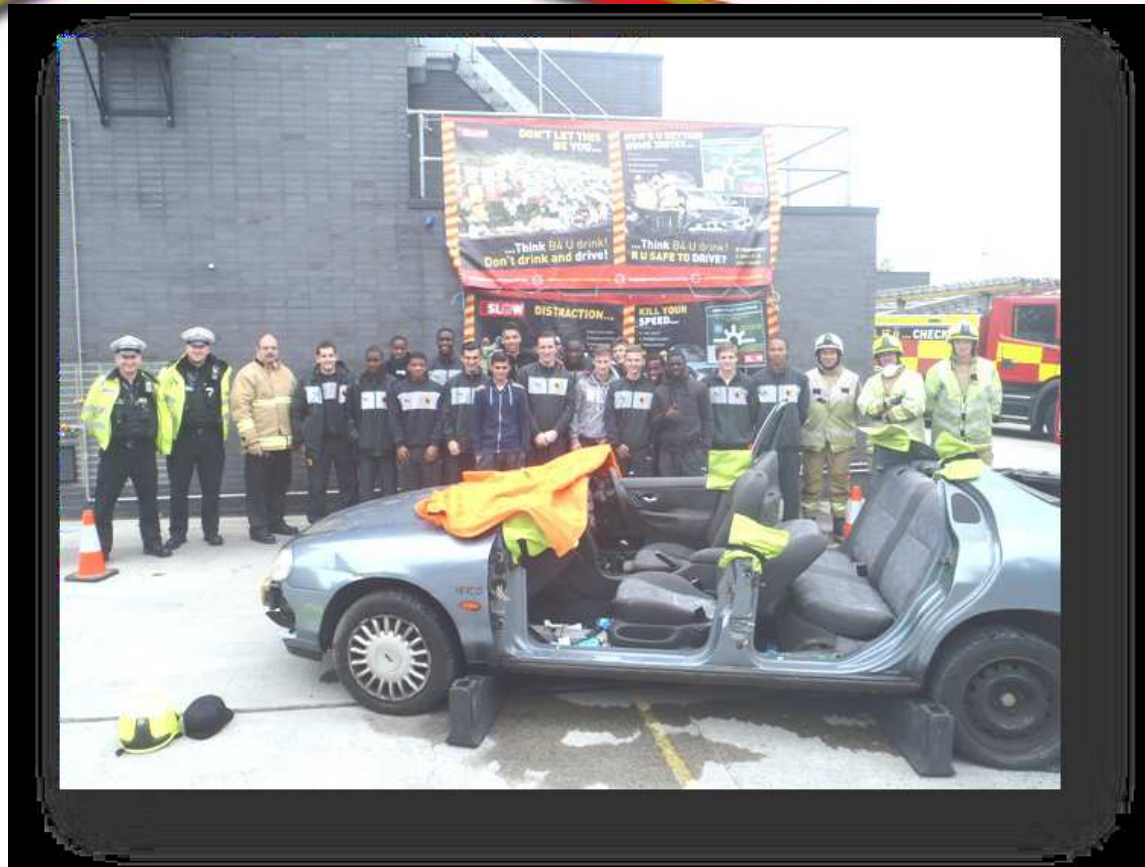




WORK EXPERIENCE

Carried out at all stations within the District.
The majority of local schools attend.
Gives insight to both working procedures and culture.





WEST HERTS COLLEGE

We have worked in partnership with the college for 7 years.
We provide Road Safety advice for all students.
They have provided posters and videos to promote safety.



COMMUNITY ENGAGEMENT

- **TARGETED.**
- Safer Streets
- Private Landlords
- Temporary Accommodation
- Accommodation above shops
- Beds in Sheds
- **EDUCATIONAL.**
- Safe Start young parents
- Side by Side
- Caring Together
- Mencap
- Driving Home for Christmas

